



**Definiens**

# **Professional 5**

**Installation Guide**

---

Definiens AG

[www.definiens.com](http://www.definiens.com)

## Imprint and Version

Document Version 5.0.6

Copyright © 2006 Definiens AG. All rights reserved.

This document may be copied and printed only in accordance with the terms of the **Frame License Agreement for End Users** of the related **Definiens Professional** software.

Published by

Definiens AG  
Trappentreustr. 1  
D-80339 München  
Germany

Phone +49-89-231180-0  
Fax +49-89-231180-90

E-mail [info@definiens.com](mailto:info@definiens.com)  
Web [www.definiens.com](http://www.definiens.com)

## Dear User,

thank you for using **Definiens Professional** software. We appreciate being of service to you with image intelligence solutions.

At Definiens we constantly strive to improve our products. We therefore appreciate all comments and suggestions for improvements concerning our software, training, and documentation.

Feel free to contact us via web form on the Definiens support website [www.definiens.com/support/index.htm](http://www.definiens.com/support/index.htm).

Thank you.

## Legal Notes

**Definiens**® and **Definiens Cognition Network Technology** are registered trademarks of Definiens AG in Germany and other countries.

All other product names, company names and brand names mentioned in this document may be trademark properties of their respective holders.

Protected by **U.S.** patents 6091852, 6229920 and 6738513 with further patents pending. Protected by **German** patents 598 04 693.3, 597 06 842.9, 596 09 349.7, 500 00 318.1, 500 00 362.9, 597 08 817.9, 500 03 227.0, 598 09 991.3, 500 03 185.1, 598 09 604.3 and 501 00 724.5 with further patents pending. Protected by **British** patents 0 870 275, 0 843 864, 0 858 051, 0 846 306, 0 863 485, 1 025 539, 1 161 735, 1 183 619, 1 238 364 and 1 272 921 with further patents pending. Protected by **French** patents 0 863 485, 1 025 539, 1 238 364 and 1 272 921 with further patents pending. Protected by **Swiss** patents 0 863 485, 1 238 364 and 1 272 921 with further patents pending.

## Table of Contents

<b>Professional 5</b>	<b>1</b>
Imprint and Version	2
Dear User,	2
Legal Notes	2
<b>Table of Contents</b>	<b>3</b>
<b>1 Where to Get Information About Definiens Professional</b>	<b>4</b>
1.1 About this Document	4
1.1.1 Information in this Installation Guide	4
1.1.2 Access to this Installation Guide	4
1.1.3 Notation	4
1.1.4 On Screen Reading with Adobe Acrobat Reader	5
1.2 Related Documents	5
1.2.1 User Guide	5
1.3 Support	5
<b>2 System Requirements</b>	<b>6</b>
<b>3 Things You Need for the Installation</b>	<b>7</b>
<b>4 Select a Type of Hardlock to Install</b>	<b>8</b>
4.1 Local Hardlock	9
4.2 Floating Hardlock	9
4.3 Hardlock Server Service	9
<b>5 Select a Type of Installation</b>	<b>10</b>
<b>6 Client Installation</b>	<b>11</b>
6.1 Required User Rights	11
6.2 Client Installation Sequence Using a Local Hardlock	11
6.3 Client Installation Sequence Using a Floating Hardlock	15
6.4 Definiens License Handling	19
<b>7 Hardlock Server Installation</b>	<b>20</b>
7.1 Required User Rights	20
7.2 Hardlock Server Installation Sequence	20
<b>8 Hardlock Utility</b>	<b>25</b>
8.1 Initialize the Hardlock Server	25
8.2 Export License Information as .ctv File	26
8.3 Update License	27
8.3.1 Update from Clipboard	28
8.3.2 Update by File	29
8.4 Generate License Status Reports	30
8.5 Aladdin DiagnostiX	30
8.5.1 Checking for a Hardlock Key	31
8.5.2 Creating Reports	32
8.5.3 Setting Environment Variables	32
<b>9 Definiens Product Family</b>	<b>36</b>
<b>10 Frequently Asked Questions (FAQ)</b>	<b>38</b>
<b>11 Glossary</b>	<b>40</b>
<b>12 Index</b>	<b>44</b>

# 1 Where to Get Information About Definiens Professional

## Contents in This Chapter

<a href="#">About this Document</a>	4
<a href="#">Related Documents</a>	5
<a href="#">Support</a>	5

This overview outlines information about **Definiens Professional** provided by this guide, related documents, the user interface, and Definiens support.

## 1.1 About this Document

### 1.1.1 Information in this Installation Guide

The Installation Guide contains all information about the product scheme, system requirements and the installation of **Definiens Professional**. Furthermore, there are chapters giving information on the different types of **Hardlocks** and how to use the **Hardlock Utility** tool.

The **Glossary** helps you with brief definitions of key words.

→ [Glossary](#)

### 1.1.2 Access to this Installation Guide

The installation guide can also be found on the **Definiens Professional** installation CD. In the root directory of the CD, open the file **InstallationGuide.pdf**. After installation, you can consult this document (**InstallationGuide.pdf**) in the installation directory on your machine. The default path is

**C:\Program Files\Definiens Professional *Version number*\UserGuides\InstallationGuide.pdf.**

### 1.1.3 Notation

#### Warnings

##### Caution or Note



A caution warns you to protect against possible damage.  
A note informs you about restrictions.

## Placeholders

Placeholders in file paths, web addresses or code are noted in italics, e.g. **C:\Program Files\Definiens Professional version number\UserGuides\UserGuide.pdf**

## References

References are indicated by an arrow.

→ [About this Document](#) on page 4

### 1.1.4 On Screen Reading with Adobe Acrobat Reader

If you display this document on screen using **Adobe Acrobat Reader**, you can benefit from several linked references.

Display a linking table of contents by clicking the navigation tab **Bookmark** on the left side of **Adobe Acrobat Reader**.

To search for a term of interest, use the **Search** Function of **Adobe Acrobat Reader 6** or higher. If you use **Adobe Acrobat Reader 5**, we recommend you to update to version 6 or higher. However, if you prefer not to, the search function in Version 5 is called **Find**.

#### Note

Using the **Search PDF** functionality of **Adobe Acrobat Reader 6** or higher, we highly recommend the following search setting of **Adobe Acrobat**:

1. Click the **Search** button on the toolbar for displaying the **Search PDF** panel on the right.
2. Select the **Include Bookmarks** checkbox. This includes the headlines into your search.
3. Continue as usual.

For installation of **Adobe Acrobat Reader 7**, you can use the **Definiens** installation CD. The path on the CD is **\3rd-party\Adobe Acrobat\AdbeRdr70\_enu\_full.exe**. Alternatively, you may download it for free on [www.adobe.com](http://www.adobe.com).

## 1.2 Related Documents

### 1.2.1 User Guide

The **UserGuide.pdf** is stored on the **Definiens** installation CD. The path on the CD is **...\UserGuide.pdf**. To consult the **User Guide** after installation, press the function key **F1** or choose **Help > Help** in the main menu.

## 1.3 Support

Feel free to contact us via internet form on the website [www.definiens.com/support/index.htm](http://www.definiens.com/support/index.htm).

## 2 System Requirements

<b>Definiens Professional</b>						
	System Requirements	CPU	RAM	Available HD Space	Display	Platform
<b>Professional</b>	Minimal	<b>Intel Pentium® 4</b>	1 GB	10 GB	1280x1024	<b>Windows® 2000 Professional</b> (Service Pack 1),
	Recommended	<b>Intel Pentium® 4</b>	2 GB	20 GB	1600x1200	<b>Windows® XP Professional,</b>  <b>Windows Server 2003® Std/EP®</b>

**Note**

*The available hard disk (HD) space is needed for the **Definiens** cache files. Make sure that the Temp Variable of the user who runs the AnalysisEngine points to this free hard disk space. The default path is: **C:\Documents and Settings\user\temp**. Alternatively, the configuration file could be adopted.*

## 3 Things You Need for the Installation

The installation of **Definiens Professional** requires the use of specific items, which you should already have obtained by Definiens AG. The items in your possession vary depending on the type of installation you need. The difference concerns the hardlock license keys. The following lists illustrate the things you need to have before you start the installation process.

### Installation of Definiens Professional on a local machine

- The **Definiens** installation CD.
- A local hardlock license key.

### Installation of Definiens Professional on a network

- The **Definiens** installation CD.
- A floating hardlock license key.
- An **.alf** license file, which should have been sent to you via e-mail or be attached to the software package on a floppy disk.

In case you have problems locating the **.alf** file or if the file was not sent to you via e-mail then please contact us: [license@definiens.com](mailto:license@definiens.com).

## 4 Select a Type of Hardlock to Install



<b>Contents in This Chapter</b>	
<b>Local Hardlock</b>	9
<b>Floating Hardlock</b>	9
<b>Hardlock Server Service</b>	9

The software is protected by **Aladdin** hardlock keys, which are connected to either, a parallel, a serial or a USB port of a machine.



There are two different types of keys: the local hardlock and the floating hardlock.

Depending on the type of hardlock you use, different installation configurations are necessary. The floating hardlock can only be used in a network neighbourhood.

### Local Hardlock

 <p>Figure 1: Local hardlock: LPT (various color combinations)</p>	 <p>Figure 2: Local hardlock: USB (blue)</p>
<p>This type of local hardlock can be connected to either a parallel or a serial port on a local machine so it can provide a single license for all <b>Definiens</b> products.</p>	<p>This type of local hardlock can be connected to a USB port on a local machine so it can provide a single license for all <b>Definiens</b> products.</p>

### Floating Hardlock

 <p>Figure 3: Floating hardlock: LPT (various color combinations)</p>	 <p>Figure 4: Floating hardlock: USB (green)</p>
<p>This type of floating hardlock can be connected to either a parallel or a serial port on a host machine within a network (the Hardlock Server machine) so it can provide licenses for all <b>Definiens</b> products. A floating hardlock can contain licenses for up to 250 users.</p>	<p>This type of floating hardlock can be connected to a USB port on a host machine within a network (the Hardlock Server machine) so it can provide licenses for all <b>Definiens</b> products. A floating hardlock can contain licenses for up to 250 users.</p>



## 4.1 Local Hardlock

A local hardlock provides a single license for a complete **Definiens Professional** system. The local hardlock driver software is installed automatically when the **Definiens Professional** software is installed. No server has to be installed.

For the installation, you need:

- A local hardlock
- The **Definiens** installation CD

### Note

Attach the hardlock to the parallel, serial or USB port before running the **Definiens** software.  
Do not attach two **Definiens** hardlocks at the same time.

## 4.2 Floating Hardlock

A floating hardlock in conjunction with an **.alf** file contains floating licenses to be distributed and used on host machines (machines connected to a network). A single floating hardlock can provide up to 250 connections. The licenses of the floating hardlock are managed and distributed by the Hardlock Server Service software which has to be installed on the Hardlock Server machine, additionally to **Definiens** client products.

## 4.3 Hardlock Server Service

Hardlock Server Service is a software component handling and distributing the floating licenses of a floating hardlock for **Definiens** clients installed on other machines in a network.

Hardlock Server Service can be either installed together with **Definiens Professional** client on the same host machine or on separate machines.

For installation of **Definiens Professional** clients and Hardlock Server Service software on the same machine see **Client Installation Sequence Using a Floating Hardlock** section.

→ [Client Installation Sequence Using a Floating Hardlock](#) on page 15

For installation of **Definiens** components and Hardlock Server Service software on separate machines see **Client Installation Sequence Using a Local Hardlock** and **Hardlock Server Installation** respectively.

→ [Hardlock Server Installation](#) on page 20

## 5 Select a Type of Installation

There are different types of installations for different system environments:

- The **Client Installation** which is used to install **Definiens Professional**. → [Client Installation](#) on page 11
- The **Hardlock Server Installation** which is used to install a license server for using a floating license scheme that can be accessed by several machines in the network. → [Hardlock Server Installation](#) on page 20

## 6 Client Installation

### Contents in This Chapter

<b>Required User Rights</b>	11
<b>Client Installation Sequence Using a Local Hardlock</b>	11
<b>Client Installation Sequence Using a Floating Hardlock</b>	15
<b>Definiens License Handling</b>	19

A client installation is used when you want to install **Definiens Professional**.

### 6.1 Required User Rights

For the client installation, you will need the following user rights during the installation process:

- Software installation rights.

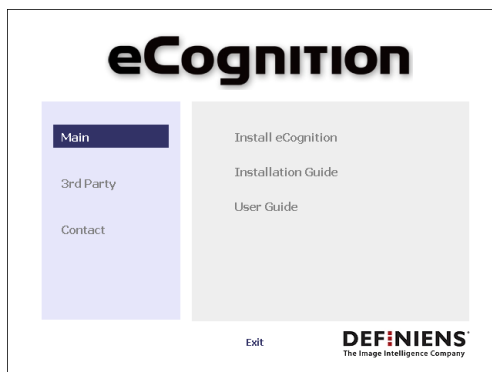
### 6.2 Client Installation Sequence Using a Local Hardlock

This section describes the steps that should be followed for installing **Definiens** client products using a local hardlock.

1. Insert the **Definiens** installation CD into the CD-ROM drive of the machine. The installation of **Definiens** will start automatically.

If the autorun option is disabled on your machine, you can start the installation manually by double-clicking on the **autostart.exe** file in the root directory of your CD.

The initial displayed window is the installation selection screen.



2. Click on the left panel and then choose an option from the right panel. The items in the left menu and their submenus are described below:

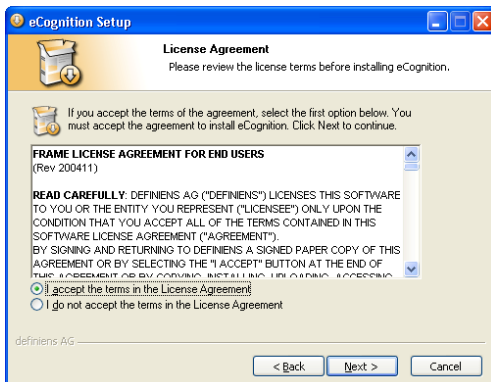
- **Main:**
  - **Install Definiens:** Installs the main product.
  - **Installation Guide:** Opens the installation guide for **Definiens** (current guide in **.pdf** format).
  - **User Guide:** Opens the user guide of the product (**.pdf** format).

For the main product installation please choose **Install Definiens**.

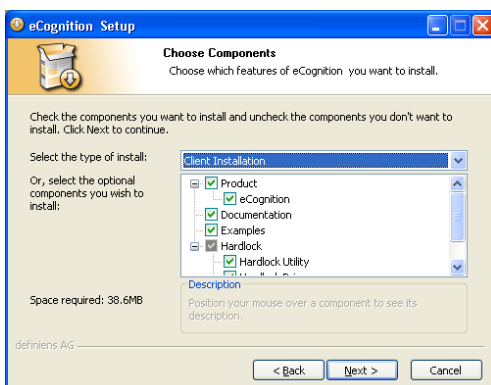
- **3rd Party Page:**  
Various **Definiens** related software.
- **Contact:**  
Definiens contact and support information.



3. Click **Next >** to continue.



4. Select, **I accept the terms in the License Agreement** in order to be able to continue with the process and then click **Next >**.

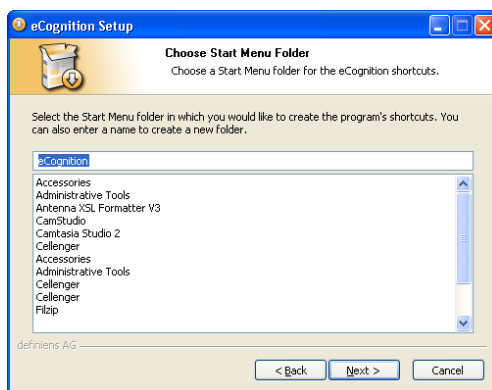


5. Go to the **Select the type of install** drop-down list and select **Client Installation**. Keep the components that are already selected.

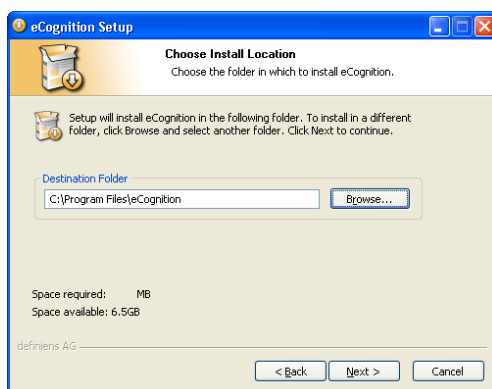
Short descriptions of all components in the list are included below:

- **Product:** Main product
  - **Definiens Professional:** The user interface of the product.
- **Documentation:** User Guide and Installation Guide.
- **Examples:** Tutorials and example data for training and self-study.
- **Hardlock:** Hardlock software
  - **Hardlock Utility:** License utility tool to manage and troubleshoot Definiens licenses.
  - **Hardlock Driver:** The required drivers for all applications. You cannot clear this box if any component that requires the hardlock driver is selected.
  - **Hardlock Server Service:** Manages and distributes the licenses over the network.

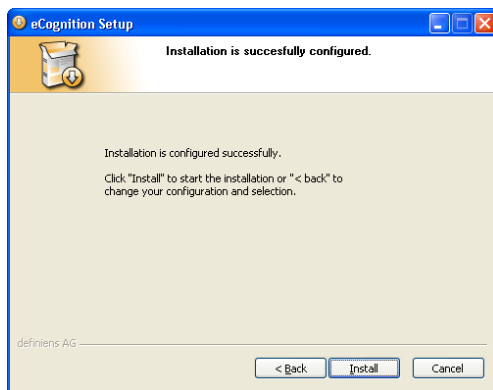
Click **Next >** to continue.



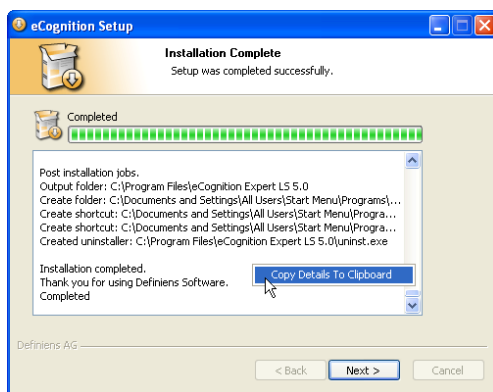
6. Choose from the list the **Start Menu Folder** in which you want to create the program's shortcuts. Alternatively, you can enter a name and create a new folder. Click **Next >** to continue.



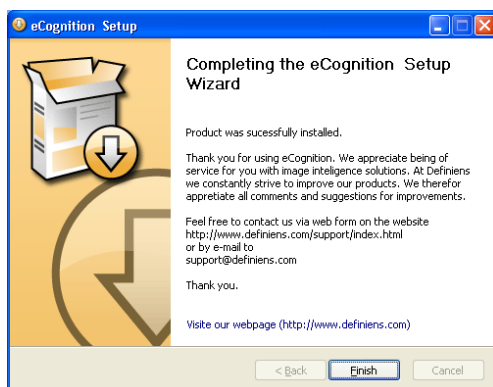
7. Choose the destination folder in which you want to install the software. If you prefer to use a different folder click **Browse ...** and select another folder. Click **Next >** to continue.



8. The installation has been configured successfully. Now, click **Install** to execute the installation. The default settings are configured here; however changes can take place later by editing the **eCognition.cfg** configuration file.



9. The installation progress is displayed in the status area. This information is saved at the **install.log** file. You can find this file in the installation directory. The default path is **C:\Program Files\Definiens Professional Version number\Install.log**. Alternatively, you can save the installation details by clicking the right mouse button in the status area for the context menu to appear and choose **Copy Details To Clipboard**. Then you can open a text editor and paste the text from the clipboard. Click **Next >** to continue.



10. The product installation has been successfully completed. Click **Finish** to close and exit the setup process.

## 6.3 Client Installation Sequence Using a Floating Hardlock

This section describes the steps that should be followed for installing **Definiens** client products using a floating hardlock.

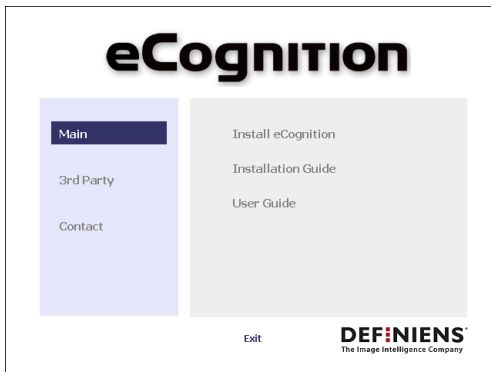
### Note

*This installation will set up **Definiens** and Hardlock Server Service on the same machine. In case you wish to install Hardlock Server Service on a separate machine then clear the Hardlock Server Service check box at the components selection (step 5).*

1. Insert the **Definiens** installation CD into the CD-ROM drive of the machine. The installation of **Definiens** will start automatically.

If the autorun option is disabled on your machine, you can start the installation manually by double-clicking on the **autostart.exe** file in the root directory of your CD.

The initial displayed window is the installation selection screen.



2. Click on the left panel and then choose an option from the right panel. The items in the left menu and their submenus are described below:

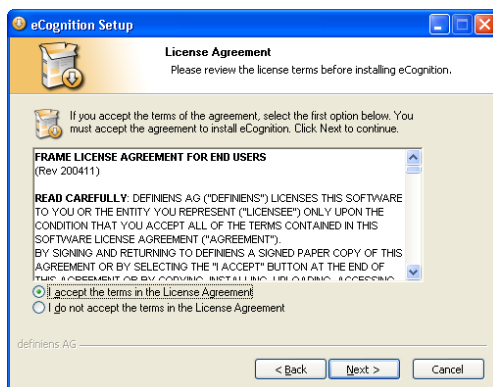
- **Main:**
  - **Install Definiens:** Installs the main product.
  - **Installation Guide:** Opens the installation guide for **Definiens** (current guide in **.pdf** format).
  - **User Guide:** Opens the user guide of the product (**.pdf** format).

For the main product installation please choose **Install Definiens**.

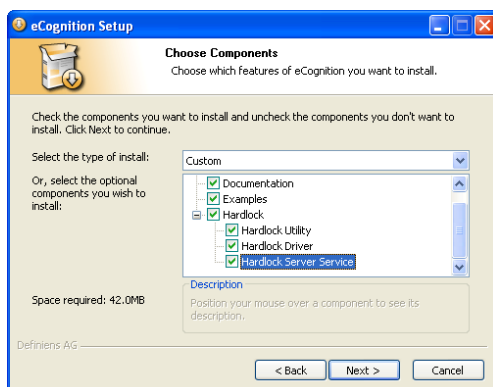
- **3rd Party Page:** Various **Definiens** related software.
- **Contact:** Definiens contact and support information.



3. Click **Next >** to continue.



4. Select, **I accept the terms in the License Agreement** in order to be able to continue with the process and then click **Next >**.



5. Go to the **Select the type of install** drop-down list and select **Custom**. Keep the components that are already selected, in addition to them select **Hardlock Server Service**.

Short descriptions of all components in the list are included below:

- **Product:** Main product  
- **Definiens Professional:** The user interface of the product.
- **Documentation:** User Guide and Installation Guide.
- **Examples:** Tutorials and example data for training and self-study.
- **Hardlock:** Hardlock software  
- **Hardlock Utility:** License utility tool to manage and troubleshoot **Definiens** licenses.

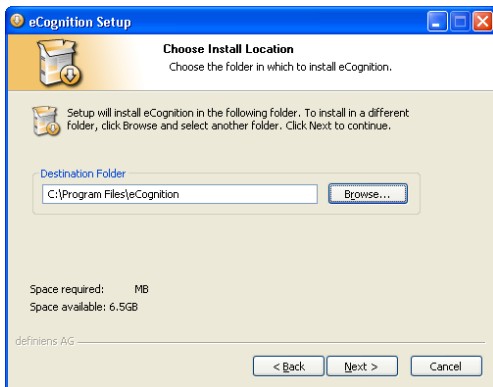


- **Hardlock Driver:** The required drivers for all applications. You cannot clear this box if any component that requires the hardlock driver is selected.
- **Hardlock Server Service:** Manages and distributes the licenses over the network.

Click **Next >** to continue.

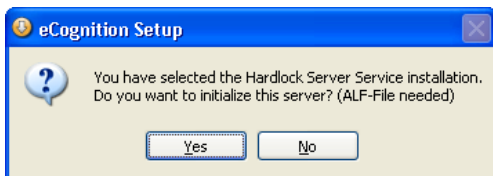


6. Choose from the list the **Start Menu Folder** in which you want to create the program's shortcuts. Alternatively, you can enter a name and create a new folder. Click **Next >** to continue.

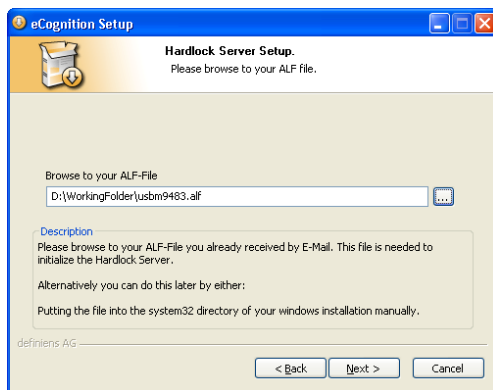


7. Choose the destination folder in which you want to install the software. If you prefer to use a different folder click **Browse ...** and select another folder. Click **Next >** to continue.

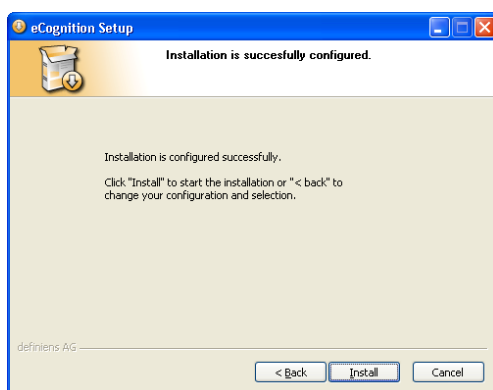
**Note**  
 If you have chosen not to install Hardlock Server Service on the same machine then continue with step 11.



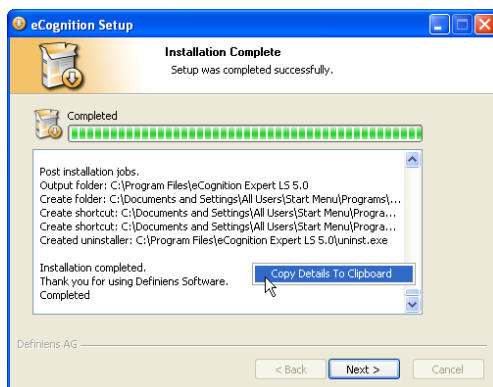
8. To locate and install the **.alf** file you click **Yes** (you should already have received this file via e-mail). If you prefer to initialize the hardlock server later, select **No** go to step 11. The hardlock server can be initialized later using the **Hardlock Utility** software.



- Click the ellipsis (...) button and browse to your **.alf** file. Click **Next >** to install the **.alf** file and to continue.



- The installation has been configured successfully. Now, click **Install** to execute the installation. The default settings are configured here; however changes can take place later by editing the **eCognition.cfg** configuration file.



- The installation progress is displayed in the status area. This information is saved at the **install.log** file. You can find this file in the installation directory. The default path is **C:\Program Files\Definiens Professional Version number\Install.log**. Alternatively, you can save the installation details by clicking the right mouse button in the status area for the context menu to appear and choose **Copy Details To Clipboard**. Then you can open a text editor and paste the text from the clipboard. Click **Next >** to continue.



12. The product installation has been successfully completed. Click **Finish** to close and exit the setup process.

## 6.4 Definiens License Handling

When you start **Definiens Professional**, a valid license is requested. Primarily **Definiens Professional** checks for a valid license on a local hardlock. If there is none, **Definiens Professional** searches for a floating hardlock by sending a license request to the hardlock server.

For updating the hardlock license, see the **Hardlock Utility** chapter.

### Note

Attach the hardlock to the machine before you launch **Definiens Professional**.

→ [Update License](#) on page 27

## 7 Hardlock Server Installation

### Contents in This Chapter

<b>Required User Rights</b>	20
<b>Hardlock Server Installation Sequence</b>	20

The **Hardlock Server Installation** is used to install the licensing server software on a network computer. This is possible for all client products when they use a floating hardlock.

### 7.1 Required User Rights

#### Note

*This installation requires a working network connection.  
Make sure you have a valid user account with the appropriate user rights.*

You need the following user rights during the installation process:

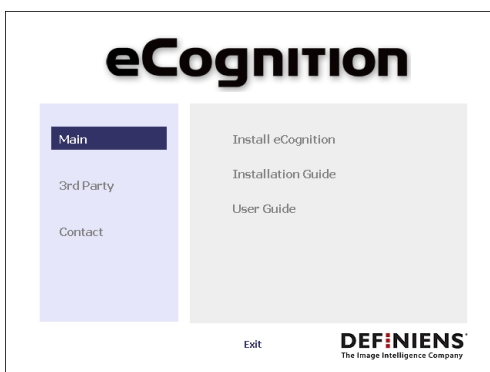
- Software installation right, and
- Install services rights.

### 7.2 Hardlock Server Installation Sequence

1. Insert the **Definiens Professional** installation CD into the CD-ROM drive of the machine. The installation of **Definiens Professional** will start automatically.

If the autorun option is disabled on your machine, you can start the installation manually by double-clicking on the **autostart.exe** file in the root directory of your CD.

The initial displayed window is the installation selection screen.

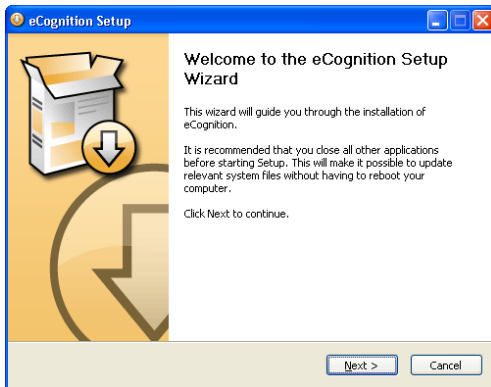


2. Click on the left panel and then choose an option from the right panel. The items in the left menu and their submenus are described below:

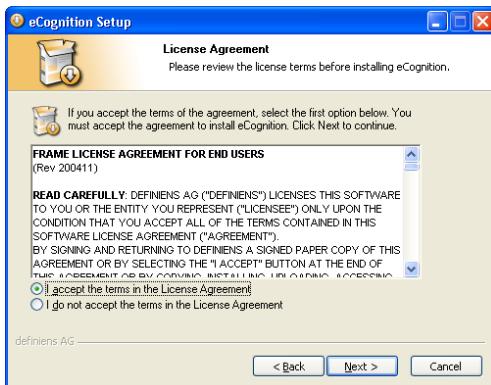
- **Main:**
  - **Install Definiens:** Installs the main product.
  - **Installation Guide:** Opens the installation guide for **Definiens** (current guide in **.pdf** format).
  - **User Guide:** Opens the user guide of the product (**.pdf** format).

For the main product installation please choose **Install Definiens**.

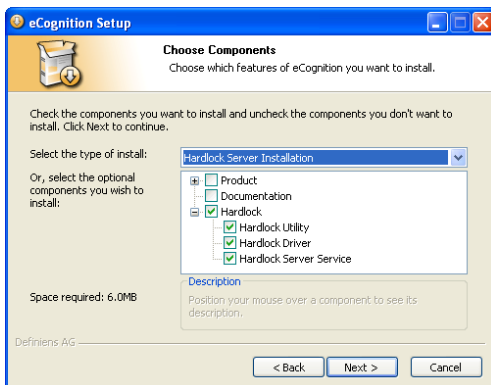
- **3rd Party Page:**  
Various **Definiens** related software.
- **Contact:**  
Definiens contact and support information.



3. Click **Next >** to continue.



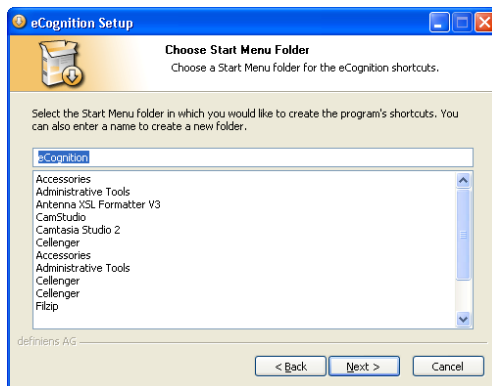
4. Select **I accept the terms in the License Agreement** in order to be able to continue with the process and then click **Next >**.



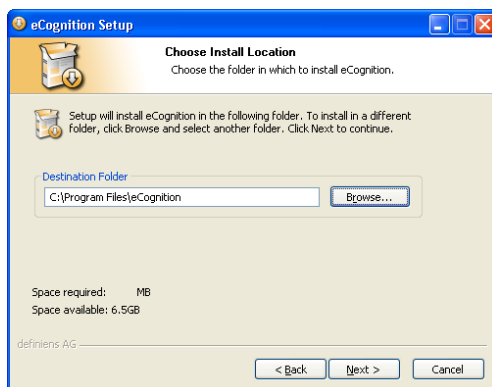
5. Go to the **Select the type of install** drop-down list and select **Hardlock Server Installation**. A short description of all components in the list is included below:

- **Product: Definiens Professional:** Client or processing components. They are not needed for a hardlock server installation.
- **Hardlock:** Hardlock software
  - **Hardlock Utility:** License utility tool to manage and troubleshoot **Definiens** licenses.
  - **Hardlock Driver:** The required drivers for all applications. You cannot clear this check box if any component that requires the hardlock driver is selected.
  - **Hardlock Server Service:** Manages and distributes the licenses over the network.

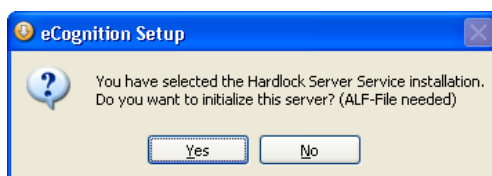
Click **Next >** to continue.



6. Choose from the list the **Start Menu Folder** in which you want to create the program's shortcuts. Alternatively, you can enter a name and create a new folder. Click **Next >** to continue.

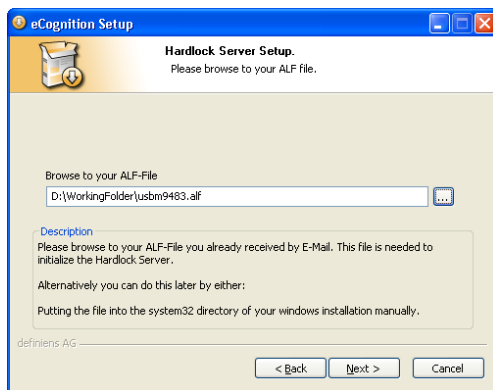


7. Choose the destination folder in which you want to install the software. If you prefer to use a different folder click **Browse...** and select another folder. Click **Next >** to continue.

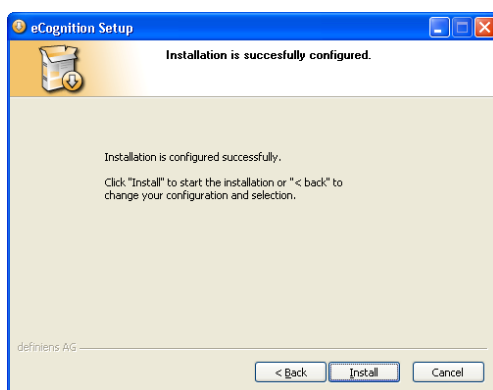


8. To locate and install the **.alf** file you click **Yes** (you should already have received this file by e-mail). If you prefer to initialize the hardlock server later, select **No** and go to step **10**. The Hardlock server can be initialized later using the **Hardlock Utility** software.

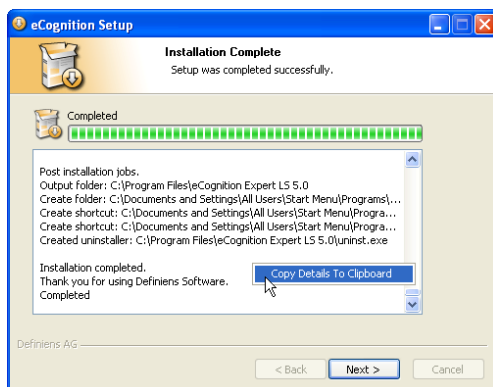
→ [Initialize the Hardlock Server](#) on page 25



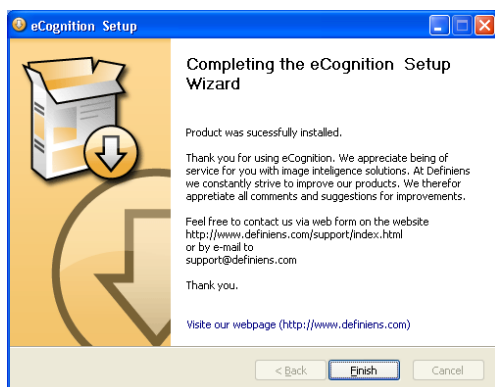
9. Click the ellipsis (...) button and browse to your **.alf** file. Click **Next >** to install the **.alf** file and to continue.



10. The installation has been configured successfully. Now, click **Install** to execute the installation. The default settings are configured here; however changes can take place later by editing the **eCognition.cfg** configuration file.



11. The installation progress is displayed in the status area. This information is saved at the **install.log** file. You can find this file in the installation directory. The default path is **C:\Program Files\Definiens Professional Version number\Install.log**. Alternatively, you can save the installation details by clicking the right mouse button in the status area for the context menu to appear and choose **Copy Details To Clipboard**. Then you can open a text editor and paste the text from the clipboard. Click **Next >** to continue.



12. The product installation has been successfully completed. Click **Finish** to close and exit the setup process.



## 8 Hardlock Utility

### Contents in This Chapter

<b>Initialize the Hardlock Server</b>	25
<b>Export License Information as .ctv File</b>	26
<b>Update License</b>	27
<b>Generate License Status Reports</b>	30
<b>Aladdin DiagnostiX</b>	30

The **Hardlock Utility** software can be found under the start menu of **Definiens Professional**. It contains the most important license utility tools to manage and troubleshoot **Definiens** licenses.

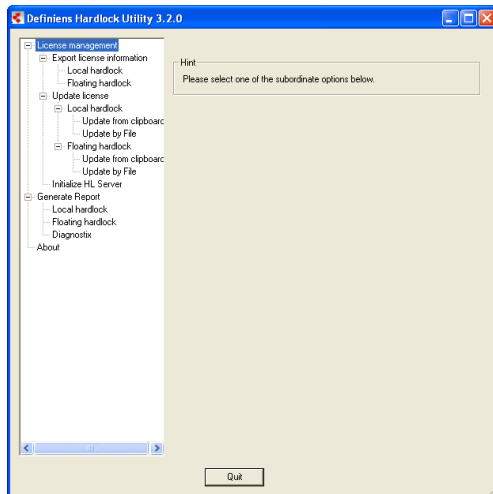


Figure 5: The Hardlock Utility software.

### 8.1 Initialize the Hardlock Server

This option is used to initialize your hardlock server with an **.alf** file. The **.alf** file is crucial when you run **Definiens** with a floating hardlock since it provides additional license information.

You should initialize the hardlock server only if you haven't already done it during the hardlock server installation process or in case you have received a new **.alf** file from your license contact person (e.g. in case the old one is corrupted).

To initialize your hardlock server, follow the steps below:

1. Select **License management > Initialize HL Server.**

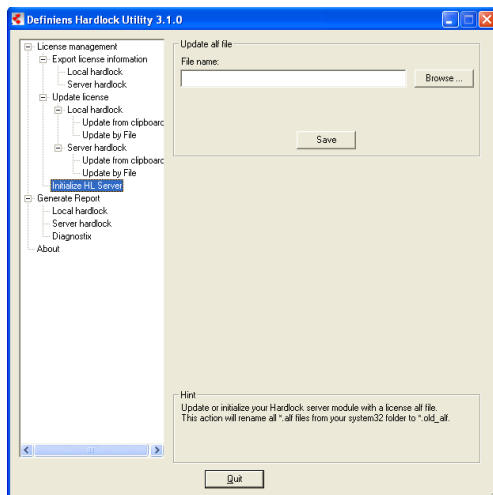


Figure 6: Initialize hardlock server with Hardlock Utility software.

2. Browse to the **.alf** file. The **.alf** file has been provided to you via e-mail or it was attached to the software package in a floppy disk.
3. Press **Save**, to update or initialize the **.alf** file. The **.alf** file will simply be copied to your **system32** folder. This will also rename all previously present **.alf** files from your **system32** folder to **.old\_alf** to prevent problems with old or corrupted **.alf** files.

## 8.2 Export License Information as .ctv File

To order license updates, you have to provide your **Definiens Professional** software license contact person with the license information of your hardlock. This information can be exported as a **.ctv** file.

1. Select **License management > Export license information.**
2. Use the option **Local Hardlock** in case you have a hardlock locally connected to your machine. Alternatively, use the option **Floating Hardlock** in case you want to get the license information of a floating hardlock. The floating hardlock is detected automatically.

### Note

*If the floating hardlock is not found automatically, press **Advanced Settings** to insert manually the IP-Address or the name of the machine where the hardlock server is installed.*

*To change the **Advanced Settings** again, you have to restart the **Hardlock Utility**.*

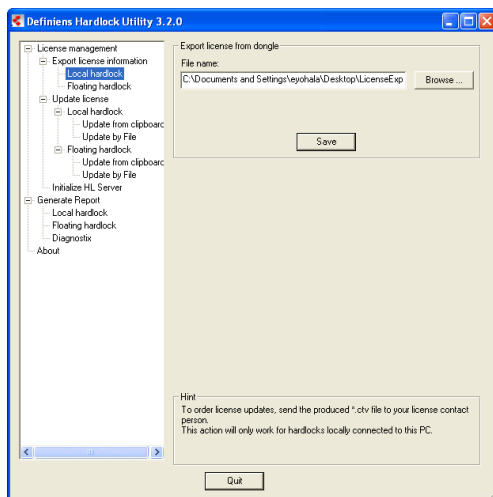


Figure 7: Export license information from a local hardlock.

3. Choose the destination folder in which you want to export the **.ctv** file. If you prefer to use a different folder click **Browse...** and select another folder.
4. Click **Save** to generate your license information.
5. Send the generated **.ctv** file to your license contact person.

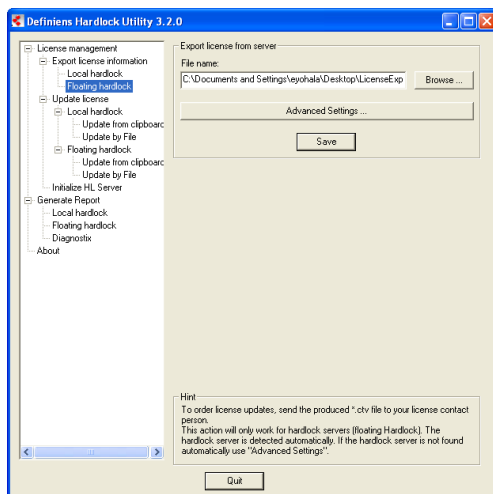


Figure 8: Export license information from a floating hardlock.

## 8.3 Update License

A license update is provided to you by your **Definiens Professional** license contact person. The license update is either: an **.exe** file, a **.vtc** file or a **vtc** block. The **.exe** file can be executed directly.

To apply the **.vtc** file, go **License management > Update license**. Select the type of hardlock you are using and then choose the approach you want to follow to update the license, from clipboard (using a **vtc** block) or by file (using a **.vtc** file).

### 8.3.1 Update from Clipboard

To update the license from clipboard you need to use a **vtc** block. A **vtc** block has to be sent to you via e-mail by your **Definiens Professional** license contact person.

- For a local hardlock the process is as follows:
  - Go to **Local hardlock > Update from clipboard**.
  - Copy and paste the license string from an update e-mail into the **License Key** text area and click **Import**.

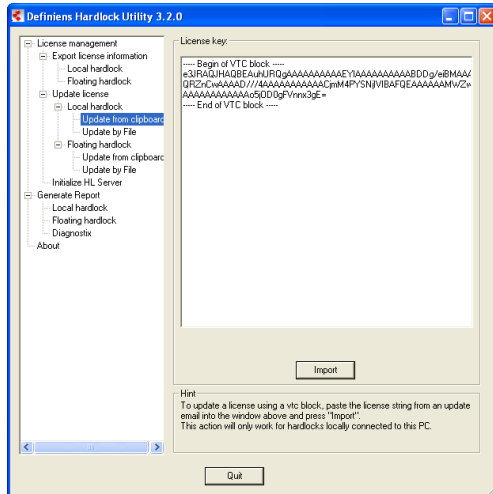


Figure 9: Update license from clipboard for a local hardlock.

- For a floating hardlock the process is as follows:
  - Go to **Floating hardlock > Update from clipboard**.
  - Copy and paste the license string from an update e-mail into the **License Key** text area and click **Import**.

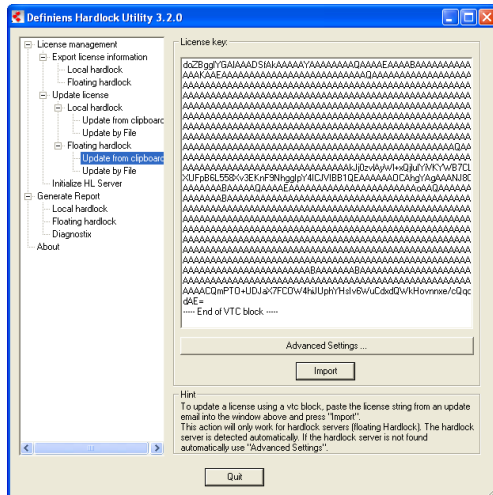


Figure 10: Update license from clipboard for a floating hardlock

The floating hardlock should be detected automatically. In case the hardlock is not found automatically, use the **Advanced Settings...** to insert manually the IP-Address or the name of the machine the hardlock server is installed on.

## 8.3.2 Update by File

To update the license by file you need to use a **.vtc** file. A **.vtc** file has to be sent to you by your **Definiens Professional** license contact person.

- For a local hardlock the process is as follows:
  - Go to **Local Hardlock > Update by file.**
  - **Browse** to the **.vtc** file and click **Import.**

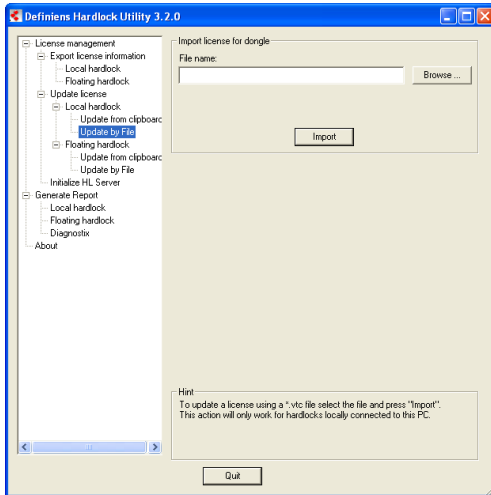


Figure 11: Update license by file for a local hardlock

- For a floating hardlock the process is as follows:
  - Go to **Floating Hardlock > Update by file.**
  - **Browse** to the **.vtc** file and click **Import.**

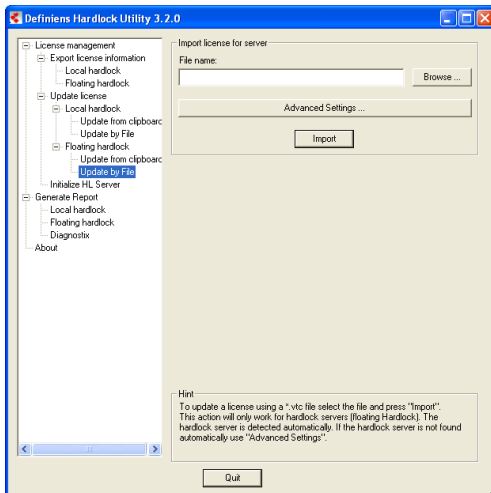


Figure 12: Update license by file for a floating hardlock

The floating hardlock should be detected automatically. In case the hardlock is not found automatically, use the **Advanced Settings** to insert manually the IP-Address or the name of the license server.

## 8.4 Generate License Status Reports

The **Hardlock Utility** software can generate reports which are used to assess the license status of the hardlock. To generate a report select **Generate Report** from the drop down menu.

Use the option **Local Hardlock** in case you have a hardlock locally connected to your machine. Alternatively, use the **Floating Hardlock** option to create a report of the license status of a floating hardlock.

- Click **Create** to create the report. The result is displayed in the **Report** text area.
- Click **Save** to save the report to a text file. If you contact the Definiens support team you might be asked to send this file.

In the case of a floating hardlock it should be detected automatically. If the hardlock is not found automatically, use the **Advanced Settings** to insert manually the IP-Address or the name of the license server.

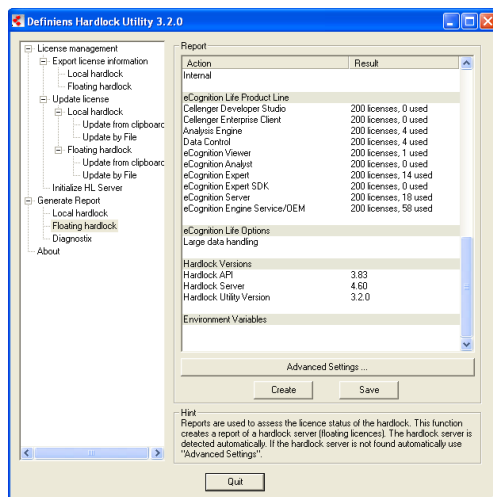


Figure 13: Generate License Status Report.

## 8.5 Aladdin DiagnostiX

In case you encounter problems while using hardlock you can refer to **Aladdin DiagnostiX** tool. **Aladdin DiagnostiX** is an additional diagnostics tool which collects information on your system and on your hardlock key. This information can be used to help you or the support team to solve those problems.

Within the **Hardlock Utility** select **Diagnostix** and then click **Start Aladdin DiagnostiX** on the right panel to start the diagnostics tool.

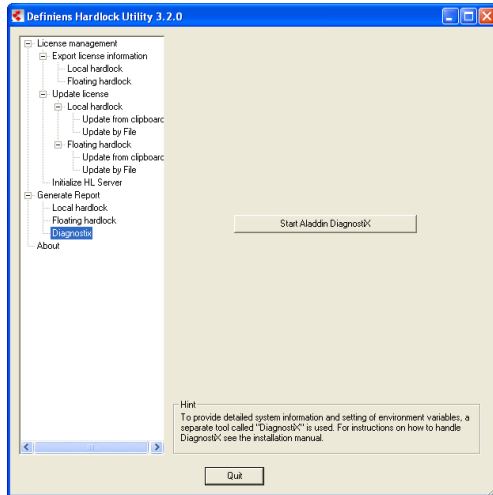


Figure 14: Start DiagnostiX tool.

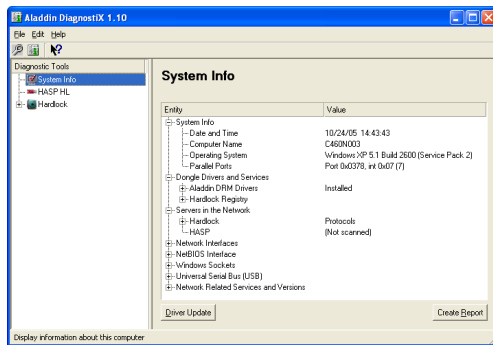


Figure 15: Aladdin DiagnostiX tool interface.

The main features for troubleshooting purposes of **Aladdin DiagnostiX** are:

- Checking for a hardlock key.
- Creating reports on **Aladdin** devices and their environment.
- Defining the hardlock environment settings.
- Viewing System information.

### 8.5.1 Checking for a Hardlock Key

From the drop-down menu in the left panel select **Hardlock**. **Check Hardlock** appears in the main right panel.

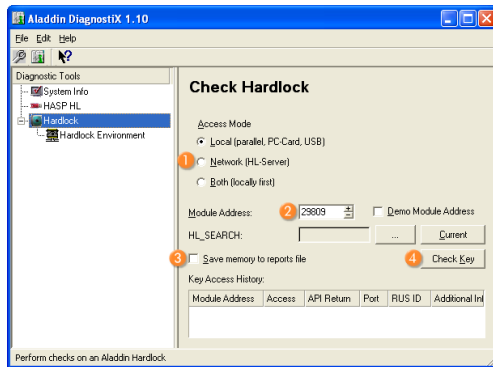


Figure 16: Check for a hardlock key in Aladdin.

1. Select the **Access Mode** type. Click **Local (parallel, PC-Card, USB)** if you use a local hardlock. Click **Network (HL-Server)** ① if you use a floating hardlock.
2. In the **Module Address** box ② enter 21736.
3. Select **Save memory to report file** ③ if you want the data within the hardlock key memory to be included in the generated report file.
4. Click **Check Key** ④ to check the key.

Information on the key access is displayed in the **Key Access History**.

## 8.5.2 Creating Reports

To create a report that will include information on the hardlock, machine and network settings you click **Create Report** in the main toolbar or you go to **Edit>Create Report**. This report will assist in the identification of possible problems occurred during the installation.

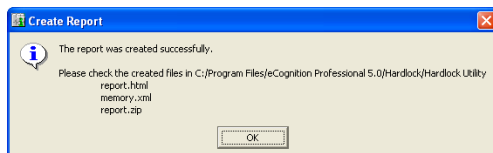


Figure 17: Create Report information box.

An information box will appear to indicate that the report has been created successfully and to provide you with a list of the generated files.

### Note

Before you create a report it is advised to go through the **Check Hardlock** process.

Check for both remote and local keys on a machine where the hardlock server is installed and on a machine where only **Definiens Professional** is installed.

The **.zip** file can then be sent to the Definiens support team.

## 8.5.3 Setting Environment Variables

In some cases you might need to set the environment variables for the hardlock driver. This necessity might occur due to the usage of a floating hardlock locally, or the use of hardlocks in complex networks, or even slow network connections etc.



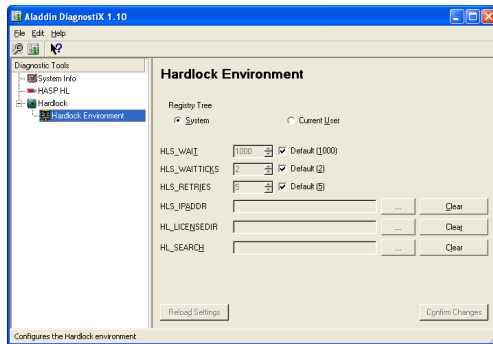


Figure 18: Hardlock Environment variables settings.

1. Click **System** if you want to apply the changes to all machines on the system, otherwise click **Current User**. Only users with the appropriate administrative rights will be able to modify the system settings.
2. Modify the current variable settings by clearing the **Default** check boxes. The environment variables are described in the following section of this chapter.
3. To apply the changes to the environment settings variables, click **Confirm Changes**. To restore the original settings click **Reload Settings**.

## Environment Variables

### HLS\_WAIT

This parameter is used to set the timeout in milliseconds for the 32-bit API. Use a higher value if you work in a slow network.

- Syntax: HLS\_WAIT
- Range: 20-3000
- Default: 1000

### HLS\_WAITTICKS

This parameter is used to set the timeout for the 16-bit API. Use a higher value if you work in a slow network

- Syntax: HLS\_WAITTICKS
- Range: 1-999
- Default: 2

### HLS\_RETRIES

This parameter is used to set the number of retries before timeout. Use a higher value if you have a bad network connection or an overloaded network.

- Syntax: HLS\_RETRIES
- Range: 2-30
- Default: 5

## HLS\_IPADDR

This parameter is used to set the server IP address. Use this parameter if a client cannot find the machine where the hardlock server is installed.

- Syntax: HLS\_IPADDR
- Range: IP address
- Default: None

Setting the parameter:

1. Click the ellipsis (...) button and select from the **Available Tokens** list the token(s) you want to use and then click the > button to move them to the **Used Tokens** list. Alternatively, you can define your own tokens by clicking on **User Defined**.
2. Review your selections. To remove an item from the **Used Tokens** list, select the token(s) and then click the < button to proceed.
3. Click **Apply** to save and apply your settings.
4. To clear the modified values for this parameter, click **Clear**.

## HL\_LICENSEDIR

This parameter is used to direct a floating hardlock to where the aladdin license files (alfs) are stored. This function is needed when you want to use a floating hardlock locally. The default location of the \*.alf file is **C:\WINDOWS\system32**.

- Syntax: HL\_LICENSEDIR
- Range: An address on the local drive
- Default: None

### **Note**

*This variable is set by default during the installation routine of **Hardlock** server software.*

Setting the parameter:

1. Click the ellipsis (...) button and browse the folder. Click **OK** to close the window, the name of the directory appears in the HL\_LICENSEDIR field.
2. To clear the modified values for this parameter, click **Clear**.

## HL\_SEARCH

This parameter is used to determine where to search for the hardlock.

- Syntax: HL\_SEARCH
- Range: Parallel, serial port, USB, IP/IPX/NETBIOS
- Default: None

**Setting the parameter:**

1. Click the ellipsis (...) button and select from the **Available Tokens** list the token(s) you want to use and then click the > button to move the token(s) to the **Used tokens** list. Alternatively, you can define your own tokens by clicking on **User Defined**.
2. Review your selections. To remove an item from the **Used Tokens** list, select the token(s) and then click < to proceed.
3. Click **Apply** to save and apply your settings.
4. To clear the modified values for this parameter, click **Clear**.

## 9 Definiens Product Family

**Definiens** provides a comprehensive suite of image intelligence, analysis and automation products designed to support a complete range of image analysis tasks across an enterprise.

The powerful **eCognition** parallel server provides unmatched image processing capability to a spectrum of users through both **Definiens** and third-party client applications.

From the single user performing simple, easy-to-use viewing and analysis tasks; through semi-automated 'click and classify', object detection and extraction right up to 'lights-out' automated high-volume batch processing; **Definiens Enterprise Image Intelligence Suite** provides the software to accelerate the process and enable a new generation of applications.

The **eCognition** platform supports highly-scalable automated analysis of complex images such as medical or satellite images including context reference, change detection and target recognition capability. Its power is based on the revolutionary and patented **Definiens Cognition Network Technology** which underpins **Definiens** products.

**Definiens Enterprise Image Intelligence Suite** comprises both enterprise and desktop components to meet all stages of the image capture, classification, analysis and automation requirements in the enterprise image value chain.

Enabling faster time to value; **Definiens Enterprise Image Intelligence Suite** supports a whole range of new **Definiens** applications and solutions for both life sciences and earth observation/geo-intelligence industries as well as a host of open API integrations to third party products.

The **Definiens Enterprise Image Intelligence Suite** is built around a parallel service oriented architecture; comprising a client services, an application accelerator layer, the **Definiens eCognition Server** and an open connectivity services layer.

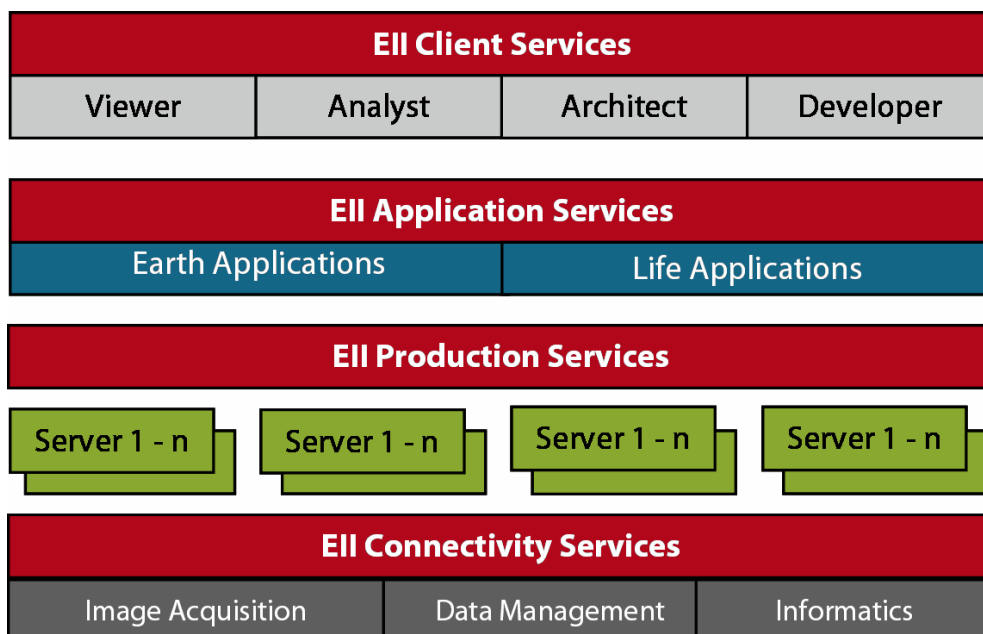


Figure 19: Definiens Enterprise Image Intelligence Suite (EII).

## Enterprise Products

**Definiens eCognition Server** is a scalable high performance computing environment for distributed high-throughput image analysis servicing **Definiens** clients and non-**Definiens** applications through powerful APIs.

**Definiens Viewer** client allows loading and manipulation of image data and viewing of analysis results produced from **Definiens Professional** or **Definiens Enterprise** products.

**Definiens Analyst** client enables the non-expert user to run pre-configured analysis routines, view, manipulate, click and classify and export analysis results.

**Definiens Architect** client: enables flexible analysis tasks without programmatic development via the powerful but simple to use module and template builder.

**Definiens Developer** client is a powerful integrated image development environment (IDE) delivering all the semantic analysis, visualization workflow and development capabilities of **eCognition**.

## Desktop Products

**Definiens Professional** is the award-winning, cost-effective but powerful introduction to **Definiens** technology. **Definiens Professional** provides the power of **eCognition** image object-oriented and context-capable analysis for a single user desktop.

## Connectivity Products

Integration options include flexible connectors to image capture devices such as scanners, microscopes, tissue micro-array devices and other specialist equipment as well as various data storage and management subsystems. Built to industry standards, the component-based design facilitates minimal maintenance and administration.

Web Services based API's provide powerful open Plug and Play interfaces to **Definiens Enterprise** clients and other third-party applications.

## 10 Frequently Asked Questions (FAQ)

### Contents in This Chapter

<b>Hardlock not Found</b>	38
<b>.Alf File not Found</b>	38
<b>Using Definiens Behind a Firewall</b>	39
<b>System Status Monitoring</b>	39
<b>Date Fake Detected</b>	39
<b>No Valid License Found</b>	39

This section presents typical questions followed by instructive answers for commonly encountered installation problems.

### Hardlock not Found

My machine does not locate the hardlock. What might be the problem?

#### Answer

This can have different reasons.

- The most obvious is that no hardlock is connected.
- In the case of a serial port hardlock: maybe the hardlock of other software products create conflicts.
- In some cases this error is also displayed when the hardlocks has expired. Clarity can be obtained by running the **Hardlock Utility** tool and checking the hardlock status.
- If more than one hardlock keys are attached to your machine, then the hardlock used for **Definiens** clients should be connected first to the port as it is transparent.
- Laptops sometimes have special settings for their parallel ports or the ports might even be disabled. This can also lead to a hardlock not being detected.

### .Alf File not Found

I cannot find the **.alf** file on my machine. What might cause this problem?

#### Answer

This message occurs in connection to the floating hardlock. It indicates that either the **.alf** file is not present or the floating hardlock can not access the file.

There are two possible reasons why you are getting this message. Firstly, maybe the **.alf** file is not in the right folder (see **Initialize the Hardlock Server** section).

→ [Initialize the Hardlock Server](#) on page 25

Secondly, maybe you are trying to work locally with a floating hardlock. To allow this the environment variable **HL\_Licensedir** needs to be set. For details see the **Environment Variables** section.

→ [Environment Variables](#) on page 33

## Using Definiens Behind a Firewall

I am using **Definiens Professional**, but I have some problems with the firewall. What can I do about that?

### Answer

Here is some information about the hardlock broadcast that might be helpful if you have a firewall setup:

Protocol: **UDP**

Remote address and port: **255.255.255.255: 3047**

## System Status Monitoring

How can I monitor the status of analysis engine and waiting jobs?

### Answer

A status page provides information about attached analysis engine and waiting jobs. To access the status page of the **eCognition JobScheduler** go to **http://Name of the eCognition ProcessingNetworkNode:8181/** You can change the settings of the **eCognition JobScheduler** by editing the configuration files.

## Date Fake Detected

I have tried to change the date and time settings at my machine when I got the message **Fake date detected**. What does it mean and why I cannot change my settings?

### Answer

The date and time settings on your machine are controlled by the hardlock. This precaution was taken in order to restrict a user from changing these settings on a machine and thereby avoiding the expiry date of a hardlock. When the date and time settings get changed in between two sessions, the hardlock will be disabled. Therefore, it is advisable to check whether the date and time settings of two computers are identical before transferring the hardlock from one computer to another.

## No Valid License Found

Occasionally, when I try to start **Definiens** I get the message **No valid license found**. What does it mean?

### Answer

You can set the IP address in the system **Control Panel > System Properties > Advanced > Environment Variables** of the client machine. However, normally, the **Hardlock** software automatically detects a hardlock in the network.  
**Variable: HLS\_IPADDR Value: insert the IP address of the Hardlock server** (Maybe you need to ask your Administrator for the right value).

If you have a slow connection you can set the following variable in the system control panel of the client computer:

**Variable: HLS\_WAIT Value: 2000** or still higher. (The value is the number of milliseconds in waiting time for a response from the hardlock server. The connection gets faster as the value gets smaller, however increasing the value results in a more stable connection).

# 11 Glossary

•

---

## **.Alf file**

A license file that contains license information and is used in conjunction with a floating hardlock. It is used to initialize the Hardlock Server.

## **.Ctv file**

A license information file generated by the **Hardlock Utility** software. This file is needed when you want to order license updates for your product.

## **.Dpj File**

See **Workspace**.

## **.Dpr File**

A **.dpr** file or project file contains all information about the saved image analysis project beside the image files. Image files are referenced by the **.dpr** file.  
See **Project**.

## **.Vtc file**

An update license file that is sent to you by Definiens license contact person via e-mail. It is used to update your product license.

## **A**

---

### **Aladdin DiagnostiX**

Diagnostics software used to collect information on the host machine and the hardlock keys in order to provide support in solving run time problems.

## **C**

---

### **Client**

A piece of software that accesses remote services from another piece of software, called a server. For example, a **Definiens** client provides the different user interface for **Definiens** products.

### **Configuration Files**

Files that contain the settings of **Definiens eCognition Server** components. After installing **Definiens** clients on a machine any required changes can take place in these files.



## CPU

Central Processing Unit. A main part of a computer system.

## E

---

### Environment Variables

A set of variables that can affect the way running programs will behave. These variables are used to pass configuration information to running programs (in this case the hardlock driver).

### Export License Information

Menu item within **Hardlock Utility** tool that exports to a file the license information of the **Definiens** products.

## F

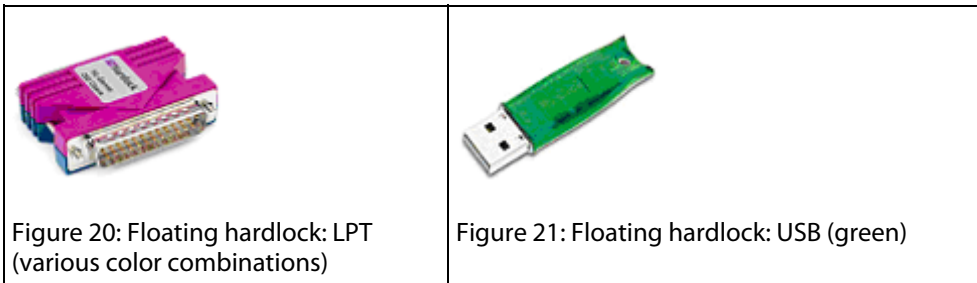
---

### File Storage

The repository for image data, results, workspaces, projects and rule sets.

### Floating Hardlock

A license key that provides licenses up to 250 machines in a network. It must be plugged in on a host machine that contains the Hardlock Server Service software to handle and distribute the licenses.



## H

---

### Hardlock

A license key that protects software. Hardlock can be connected to a parallel, serial or a USB port of a machine.

See also **Local Hardlock** and **Floating Hardlock**.

### Hardlock Driver

A software component that controls and communicates with the hardlock hardware device (i.e. local hardlock, or floating hardlock). The hardlock driver is installed automatically whenever you install an **Definiens** client.

**Hardlock License Key**

See **Hardlock**.

**Hardlock Server Machine**

A machine that is hosting the hardlock server service.

**Hardlock Server Service (HLSS)**

Software installed on a host machine that manages and distributes the licenses provided by the floating hardlock. The machine hosting the Hardlock Server Service (HLSS) is known as the hardlock server machine.

**Hardlock Utility**

A license utility tool to manage and troubleshoot **Definiens** licenses.

**Hardware Device**

A hardware device consists of all the physical parts of a machine (computer) (e.g. keyboard, mouse, hardlock).

**Host Machine**

A machine connected to a network on which the floating hardlock is plugged in.

**Hyper threading CPU**

Hyper threading works by duplicating certain sections of the CPU, particularly the ones that store the state of a process. This technology improves the CPU performance and it gives the ability to the CPU to run two processes simultaneously.

**L**

---

**LDH**

Acronym that stands for: Large Data Handling.

**License Status Report**

Reports generated by the **Hardlock Utility** tool. They are used to assess the license status of a hardlock key.

## Local Hardlock

A license key that provides a single license for the complete **Definiens** system. It is used on a local machine.



## Local Host

The currently used machine connected to a network is called local host (e.g. your PC or workstation).

## P

---

### Project

A wrapper for all information that is related to one scene (e.g. images, rule-sets). A project is saved as a **.dpr** file. It stores references to at least one image layer and related result information from image analysis expressed by classified image objects. A scene holds meta data like layer aliases or unit information. Optionally, a project can enclose thematic layers.

## S

---

### Scene

Combined input image data from an **Definiens Professional** project or workspace. A scene consists of at least one image layer. Depending on the imaging facility, a scene combines multiple layered views of the same subset of reality. To put it simply, a scene can include several images of the same thing, each of them providing different information. Optionally, a scene can enclose thematic layers.

A scene can be stored as a project.

## V

---

### vtc block

A license string used to update the current product license. This block is sent to you by Definiens license contact person via e-mail.

## 12 Index

- .
- .alf file 25
- .ctv file 26
- .vtc file 27
- A**
- Aladdin DiagnostiX 30
- C**
- client installation
  - using Floating Hardlock 15
- creating reports 32
- D**
- Definiens
  - Enterprise Image Intelligence Suite 36
  - product family 36
- dongle 8
- E**
- Enterprise Image Intelligence Suite 36
- environment variables 33
  - setting 32
- F**
- firewall 39
- floating hardlock 9
- H**
- hardlock 8
  - check 31
- Hardlock Server Service 9
- hardlock server(machine)
  - initializing hardlock server 25
  - installation 20
- Hardlock Utility 25
  - HLS\_IPADDR 33
  - HLS\_LICENSEDIR 33
  - HLS\_RETRIES 33
  - HLS\_SEARCH 33
  - HLS\_WAIT 33
  - HLS\_WAITTICKS 33
- I**
- installation requirements 7
- L**
- license 8, 25
  - exporting license information 26
  - generating status reports 30
  - update by file 29
  - update from clipboard 28
  - updating license 27
- local hardlock 9
- P**
- product family 36
- R**
- requirements 7
- S**
- system status 39
- T**
- troubleshooting 25
- U**
- update license 27
- V**
- vtc block 27